

2024 Fraser Health Climate Change Accountability Report



Carbon Neutral



DECLARATION STATEMENT

This PSO Climate Change Accountability Report for the period January 1, 2024, to December 31, 2024, summarizes our greenhouse gas (GHG) emissions profile, the total offsets to reach net-zero emissions, the actions we have taken in 2024 to minimize our GHG emissions, and our plans to continue reducing emissions in 2025 and beyond.

AUTHORS

This report was written by Energy and Environmental Sustainability (EES), a regional collaboration team of four health organizations that works to drive change for environmentally sustainable and climate resilient care across planning, design, construction and operations. Housed within the Facilities Management department, the EES team cannot do this work alone, and works with diverse teams, departments, health care staff and medical staff across Fraser Health.

COLLABORATORS

In particular, we'd like to acknowledge the contributions of the Planetary Health Steering Committee and Working Groups, Planetary Health Leads, Communications, Population Public Health, Indigenous Health, Environmental Services, Integrated Protection Services, Transportation, Commercial Services, Patient Partners, Clinical Quality and Patient Safety, Pharmacy, Facilities Management, Lab Services, Professional Practice, Food Services, PHSA Procurement and Supply Chain, Green Teams, Green+Leaders and many others named throughout this report.

2024 Energy and Environmental Sustainability team. All rights reserved.

This report has been designed by Be the Change Group for the Energy and Environmental Sustainability team.

Unless otherwise noted, all materials may be freely reproduced in part or in full, provided that the source is acknowledged.

Suggested citation:

Fraser Health Climate Change Accountability Report 2024.
Energy and Environmental Sustainability team, British Columbia, Canada.

For further information contact:

Sonja Janousek
Environmental Sustainability Director
sonja.janousek@vch.ca

A scenic landscape featuring snow-capped mountains, a forested valley, a town, and a river. The mountains are partially covered in snow and are set against a clear blue sky with some light clouds. The valley is filled with dense evergreen forests. In the foreground, a town with several buildings is visible, situated along a river. The river flows through the town and towards the right side of the image. The overall scene is peaceful and majestic.

Recognizing First Nations Title and Rights and Indigenous Human Rights

We recognize that Fraser Health provides care on the traditional, ancestral and unceded lands of the Coast Salish and Nlaka'pamux Nations and is home to 32 First Nations within the Fraser Salish region.

Fraser Health is dedicated to serving all Indigenous people and honours the unique cultures of the First Nations, Métis and Inuit living within the Fraser Salish region.

Indigenous Peoples have been stewards and caretakers of the lands, waters and ice and leaders in ecosystem conservation in what is now known as Canada since time immemorial. Recognizing, learning from and incorporating Indigenous traditional ecological knowledge into our planetary health and anchor mission goals is a priority for Fraser Health.

2024 Fraser Health Climate Change Accountability Report (CCAR)

NAVIGATION

- **Table of Contents**
- Executive Message**
- Our Story: Fraser Health's Commitment to Planetary Health**
- Our Progress: Tracking the Journey**
- Our Leadership: Collaborative and Integrated Action**
- Our Partners**
- 2024 GHG Emissions and Offsets Summary Table**
- References**

RELATED REPORT

Green+Leaders Annual Report

Table of Contents

| | |
|---|----|
| Executive Message | 3 |
| Our Story: Fraser Health's Commitment to Planetary Health | 4 |
| Our Progress: Tracking the Journey | 5 |
| Energy and Carbon | 7 |
| Transportation | 11 |
| Waste | 13 |
| Water | 16 |
| Our Leadership: Collaborative and Integrated Action | 18 |
| Buildings | 19 |
| Fleet Vehicles and Transportation | 20 |
| Paper | 21 |
| Refrigerants | 21 |
| Climate Risk Management | 22 |
| Transforming Patient Care with Planetary Health | 23 |
| Our Partners | 25 |
| 2024 GHG Emissions and Offsets Summary Table | 27 |
| References | 28 |



This is an interactive report. Easily navigate to different sections by **clicking on the text headings, including those in the navigation bar to the left.**

2024 Fraser Health Climate Change Accountability Report (CCAR)

NAVIGATION

Table of Contents

► Executive Message

Our Story: Fraser Health's Commitment to Planetary Health

Our Progress: Tracking the Journey

Our Leadership: Collaborative and Integrated Action

Our Partners

2024 GHG Emissions and Offsets Summary Table

References

RELATED REPORT

Green+Leaders Annual Report



Executive Message

Our changing climate demands transformation across all sectors of society, and health care is no exception. 2024 was our 15th consecutive year of achieving carbon neutrality, in alignment with the Climate Change Accountability Act, through emissions reduction projects and paying carbon offsets. Our greenhouse gas emission offsets from buildings, fleet vehicles, paper and refrigerants totalled 42,081 tonnes CO₂e, representing a 4 per cent increase from the previous year. To balance these emissions, we will invest \$1,105,939 in carbon offsets.

Yet, the emissions we are required to report represent a limited subset of health care's overall carbon footprint. We continue to partner with other health authorities, our community and other experts to reduce our overall emissions. In this report, we highlight some of the strategic

resourcefulness and innovation in our planetary health work. Together, we are expanding our understanding of health care's impact on the environment, and finding ways to address it while enhancing quality care and system efficiency.

For example, we are educating our community about medical inhaler emissions. When patients learn that certain inhalers contribute greenhouse gas emissions equivalent to approximately 20 per cent of our buildings' total energy footprint, they overwhelmingly request lower carbon alternatives—a powerful reminder that transparency can lead to meaningful change.

Consistently, health care systems that prioritize planetary health reduce pollutants that directly cause disease, nurture communities that need less medical intervention, develop facilities and

practices that accelerate healing times, and generate cost savings that can be redirected to improve clinical services.

As we move forward, we understand that the health of our patients, our communities, and our planet are inextricably linked, and our actions must reflect this. Together, we are creating a health care system that not only responds to the health challenges of our changing climate but cares for the planet we all love.



Dr. Lynn Stevenson

Interim President and Chief Executive Officer
Fraser Health

2024 Fraser Health Climate Change Accountability Report (CCAR)

NAVIGATION

Table of Contents

Executive Message

► **Our Story: Fraser Health's Commitment to Planetary Health**

Our Progress: Tracking the Journey

Our Leadership: Collaborative and Integrated Action

Our Partners

2024 GHG Emissions and Offsets Summary Table

References

RELATED REPORT

Green+Leaders Annual Report

Our Story: Fraser Health's Commitment to Planetary Health

Fraser Health Together

Through partnerships, research, measurement, evaluation, technology and leadership, we will take concrete actions informed by our strategic priorities and continue to drive change across our organization and region.

This work is critical to the health of our population. Climate change is known to drive poor health outcomes, such as respiratory, cardiovascular, renal and mental health, as well as increase the risk of infectious disease, adding additional climate-related pressures on health care infrastructure and demand. Unfortunately, we have already seen significant impacts of climate change on health care delivery locally. We have seen the impacts of severe climate events in our region, including the heat dome and flooding.

To do our part in mitigating these risks, in 2024, we activated and enabled people and teams across our system toward our planetary health goals. Over 85 per cent of sites, programs and services across Fraser Health had quality improvement initiatives aimed at increasing sustainability, and that momentum is building.

We will also continue to provide training and opportunities for medical and non-medical staff to learn about planetary health and climate change in health care, and to support innovation in

sustainability. By working together and identifying the actions we are able to control and change, we can transform our health system so it is not only resilient to current and future threats, but also environmentally sustainable.

Everyone has a right to optimum health and well-being. However, climate change and environmental degradation disproportionately affect the health of some individuals and groups due to existing social and economic disadvantages. These disadvantages create inequalities in health outcomes or in access to resources that must be considered in our efforts to restore and protect our environment.

To this end we will continue to do our part in the prevention of climate-related health impacts and protection of health through climate adaptation and mitigation.

In 2023, we developed a **Planetary Health Strategy** that features the following strategic priorities:

- 1 Reduce the impact of our services on the planet.
- 2 Create a climate resilient health system.
- 3 Live our anchor mission by reinforcing the connection between planetary health and healthy communities.
- 4 Cultivate a culture and system of social and environmental responsibility.

**2024
Fraser Health
Climate Change
Accountability
Report (CCAR)**

NAVIGATION

Table of Contents

Executive Message

**Our Story: Fraser
Health's Commitment
to Planetary Health**

► **Our Progress: Tracking
the Journey**

Energy and Carbon

Transportation

Waste

Water

**Our Leadership:
Collaborative and
Integrated Action**

Our Partners

**2024 GHG Emissions and
Offsets Summary Table**

References

RELATED REPORT

Green+Leaders Annual Report

Our Progress: Tracking the Journey



2024 Fraser Health Climate Change Accountability Report (CCAR)

NAVIGATION

Table of Contents

Executive Message

Our Story: Fraser Health's Commitment to Planetary Health

► Our Progress: Tracking the Journey

- Energy and Carbon
- Transportation
- Waste
- Water

Our Leadership: Collaborative and Integrated Action

Our Partners

2024 GHG Emissions and Offsets Summary Table

References

RELATED REPORT

Green+Leaders Annual Report

Regulatory Guidance

B.C. public sector organizations, like Fraser Health, are expected to prepare for the impacts of climate change and do their part to protect the environment by following government requirements and meeting set goals. The [Climate Change Accountability Act](#) sets ambitious greenhouse gas (GHG) emissions reduction targets (from a 2007 baseline) for public sector organizations:

40%
by 2030

60%
by 2040

80%
by 2050

These targets include emissions from owned and leased buildings, and from the use of fleet vehicles and paper consumption.

The provincial government's [CleanBC Plan and Roadmap](#) sets even more aggressive targets (from a 2010 baseline):

50%
reduction in emissions for public sector buildings by 2030

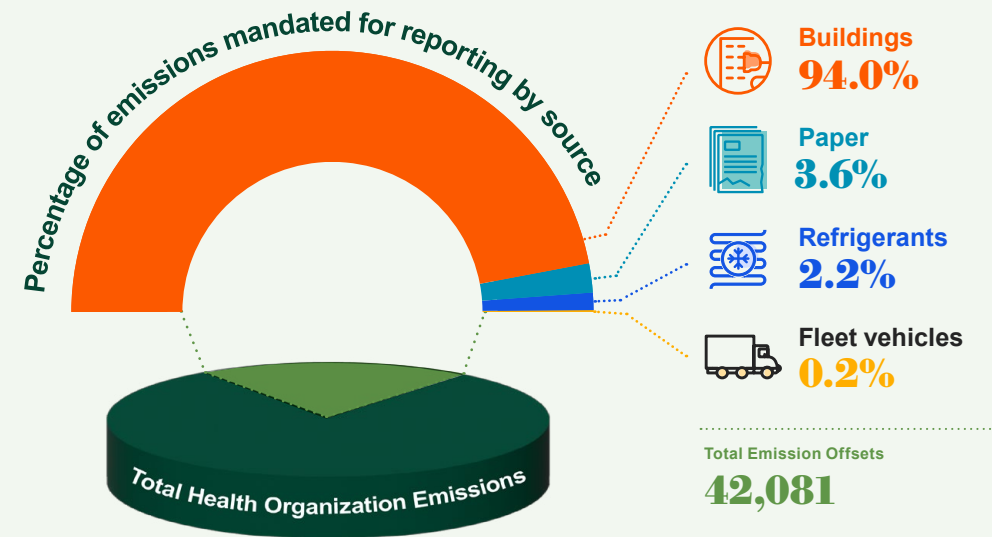
40%
reduction in fleet vehicle emissions by 2030

Health Care Opportunities to Increase Impact

As a leader in environmentally sustainable and climate resilient care, Fraser Health recognizes that meaningful climate action extends beyond in-scope emissions reporting. Our goal is not simply to meet regulatory requirements, but to lead by example within the health care sector. B.C.'s [Climate Change Accountability Act](#) mandates reducing emissions from buildings, fleet vehicles, paper, and refrigerants (using a new reporting method for this year). These sources represent only a fraction of health care's total environmental impact.

By tracking key performance indicators in energy use, GHG emissions, waste, transportation and water, we are developing innovative solutions to understand and reduce our organizational footprint. We're enhancing our emissions tracking to include complex areas like refrigerant assets, with a new methodology for reporting fugitive emissions from large refrigeration equipment such as heating, cooling, ventilation and medical equipment.

2024 Fraser Health GHG Emissions



2024 Fraser Health Climate Change Accountability Report (CCAR)

NAVIGATION

Table of Contents

Executive Message

Our Story: Fraser Health's Commitment to Planetary Health

Our Progress: Tracking the Journey

- ▶ Energy and Carbon
- Transportation
- Waste
- Water

Our Leadership: Collaborative and Integrated Action

Our Partners

2024 GHG Emissions and Offsets Summary Table

References

RELATED REPORT

Green+Leaders Annual Report



Energy and Carbon



New construction activity is growing at a fast pace and impacts our ability to meet GHG emissions targets.

| | Key Performance Indicator (Metric) | 2024 Results** | 2025 Target | 2030 Target |
|---------------------|---|----------------|-------------|-------------|
| Regulatory Guidance | To meet the CCAA target, decrease total GHG emissions from owned and leased buildings, fleet vehicles and paper use from 2007 levels (% change of tCO ₂ e*/year) | -7% | 16% | 40% |
| | To meet the CleanBC target, decrease total GHG emissions from owned and leased buildings from 2010 levels (% change of tCO ₂ e/year) | -9% | 16% | 50% |
| | Decrease the amount of GHG emissions generated per floor area of owned and leased buildings from 2010 levels (% change of tCO ₂ e/m ² /year) | 16% | 25% | 50% |
| | Decrease the amount of energy used per floor area of owned buildings ^A from 2007 levels (% change of kWh/m ² /year) | 9% | 20% | 25% |



The Residence In Mission (TRIM) in Mission, B.C.

- On track to meet target
- Minimal or slow progress toward target
- Behind schedule to meet target, and requires attention

* tCO₂e refers to tonnes of carbon dioxide equivalent

** GHG emissions increased in 2024 mostly due to the inclusion of refrigerants and ongoing major construction activity

2024 Fraser Health Climate Change Accountability Report (CCAR)

NAVIGATION

[Table of Contents](#)

[Executive Message](#)

[Our Story: Fraser Health's Commitment to Planetary Health](#)

[Our Progress: Tracking the Journey](#)

- [Energy and Carbon](#)
- [Transportation](#)
- [Waste](#)
- [Water](#)

[Our Leadership: Collaborative and Integrated Action](#)

[Our Partners](#)

[2024 GHG Emissions and Offsets Summary Table](#)

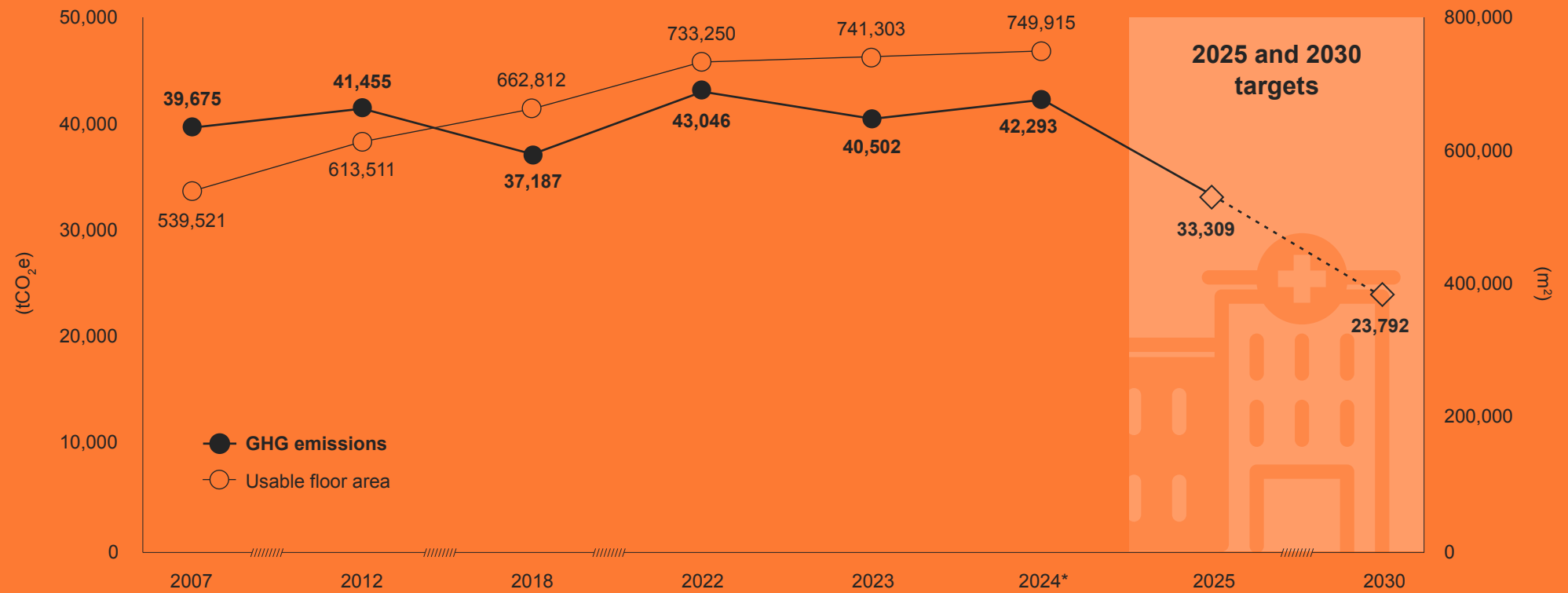
[References](#)

RELATED REPORT

[Green+Leaders Annual Report](#)

GHG Emissions (Owned and Leased Buildings, Fleet, Paper and Refrigerants) and Usable Floor Area

GHG emissions have increased by **7%** since 2007 while the portfolio has increased by over 40%.



* 2024 is the first year refrigerants are included in reported emissions data.

2024 Fraser Health Climate Change Accountability Report (CCAR)

NAVIGATION

[Table of Contents](#)

[Executive Message](#)

[Our Story: Fraser Health's Commitment to Planetary Health](#)

[Our Progress: Tracking the Journey](#)

- ▶ Energy and Carbon
- Transportation
- Waste
- Water

[Our Leadership: Collaborative and Integrated Action](#)

[Our Partners](#)

[2024 GHG Emissions and Offsets Summary Table](#)

[References](#)

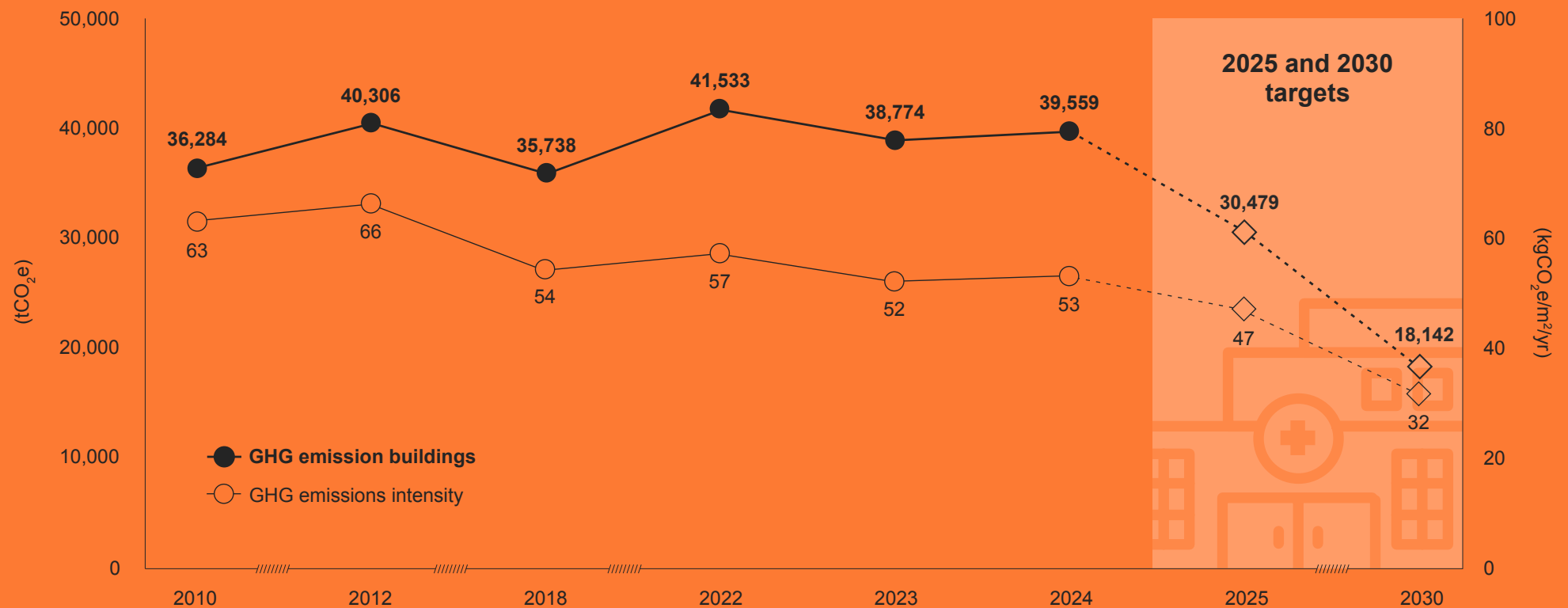
RELATED REPORT

[Green+Leaders Annual Report](#)

GHG Emissions and Intensity (Buildings Only, Owned and Leased)

GHG emissions from buildings have increased by **9%** since 2010.

GHG emissions generated per floor area have decreased by **16%** since 2010.



2024 Fraser Health Climate Change Accountability Report (CCAR)

NAVIGATION

[Table of Contents](#)

[Executive Message](#)

[Our Story: Fraser Health's Commitment to Planetary Health](#)

[Our Progress: Tracking the Journey](#)

- ▶ [Energy and Carbon](#)
- ▶ [Transportation](#)
- ▶ [Waste](#)
- ▶ [Water](#)

[Our Leadership: Collaborative and Integrated Action](#)

[Our Partners](#)

[2024 GHG Emissions and Offsets Summary Table](#)

[References](#)

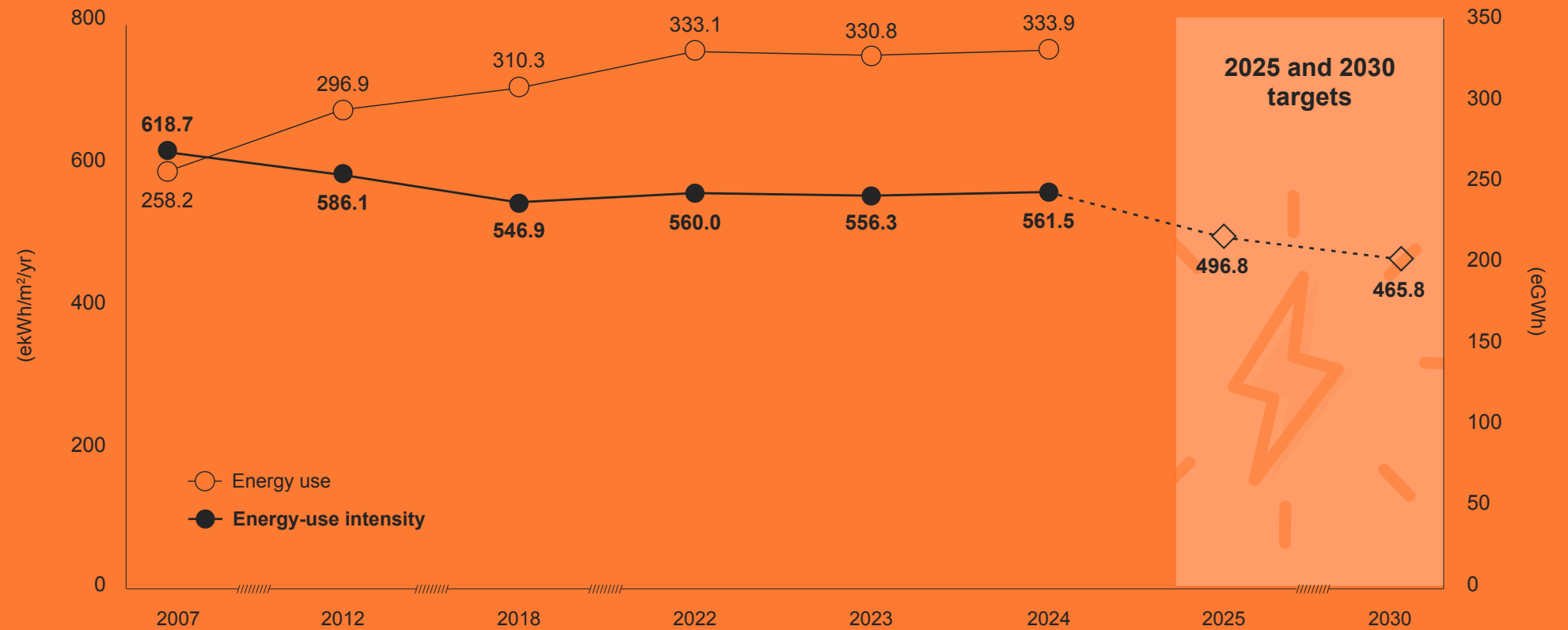
RELATED REPORT

[Green+Leaders Annual Report](#)

Energy Use and Intensity

Energy use has **increased by 29%** since 2007.

Energy use per floor area has **decreased by 9%** since 2007.



2024 Fraser Health Climate Change Accountability Report (CCAR)

NAVIGATION

Table of Contents

Executive Message

Our Story: Fraser Health's Commitment to Planetary Health

Our Progress: Tracking the Journey

Energy and Carbon

► Transportation

Waste

Water

Our Leadership: Collaborative and Integrated Action

Our Partners

2024 GHG Emissions and Offsets Summary Table

References

RELATED REPORT

Green+Leaders Annual Report



Transportation

| Key Performance Indicator (Metric) | 2024 Results | 2025 Target | 2030 Target |
|--|--------------|-------------|-------------|
| Increase staff commuting by cycling, walking, rolling* and all other active transportation (% commutes, annual average)*** | 6% | 10% | 15% |
| Increase staff commuting by public transit, car share, carpool, low-emission vehicles** and hospital shuttle (% commutes, annual average)*** | 30% | 25% | 30% |

■ On track to meet target

◆ Minimal or slow progress toward target

● Behind schedule to meet target, and requires attention

* E.g. wheelchair, seated electric scooter

** E.g. electric and hybrid vehicles

*** Data from the 2025 GreenCare survey^B



EV charging station at Ridge Meadows Hospital

2024 Fraser Health Climate Change Accountability Report (CCAR)

NAVIGATION

[Table of Contents](#)

[Executive Message](#)

[Our Story: Fraser Health's Commitment to Planetary Health](#)

[Our Progress: Tracking the Journey](#)

[Energy and Carbon](#)

[Transportation](#)

[Waste](#)

[Water](#)

[Our Leadership: Collaborative and Integrated Action](#)

[Our Partners](#)

[2024 GHG Emissions and Offsets Summary Table](#)

[References](#)

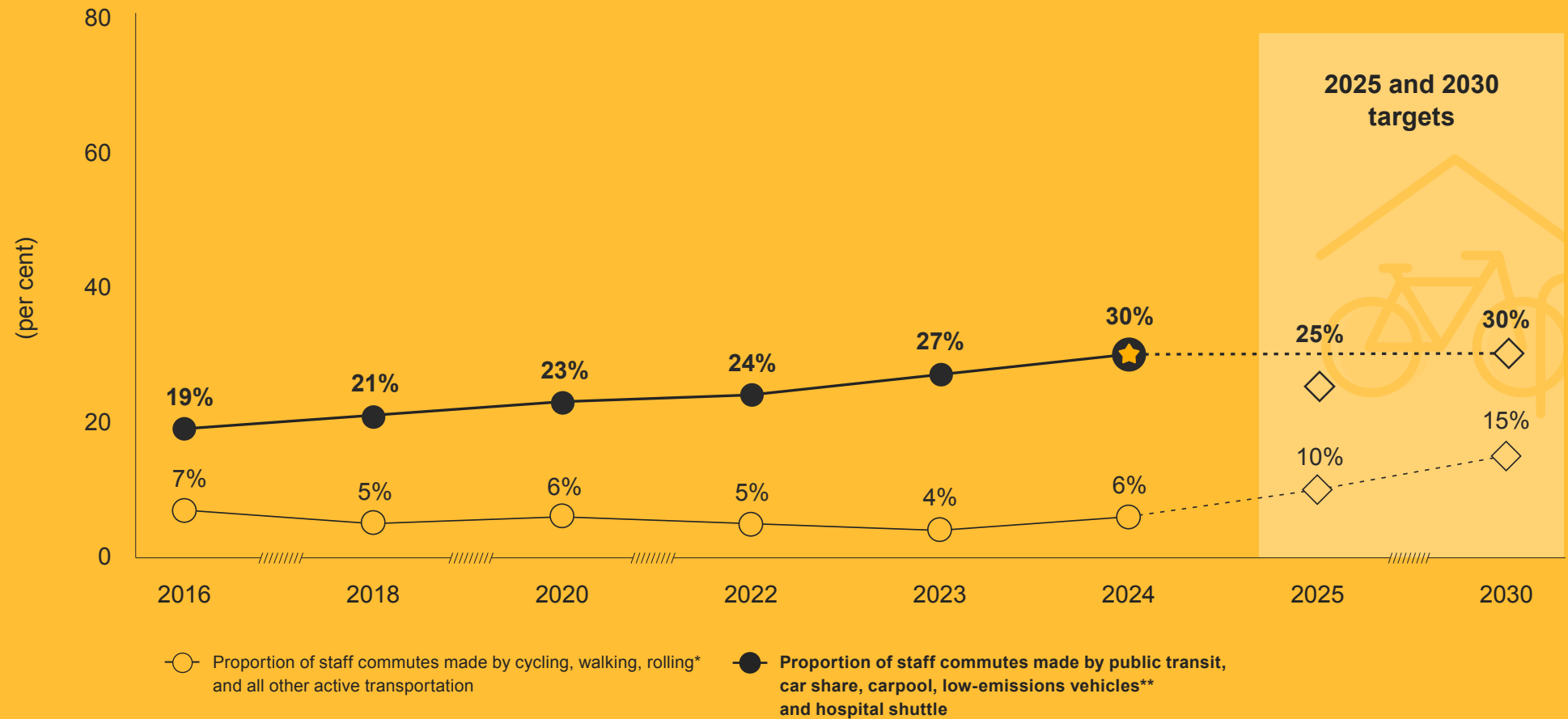
RELATED REPORT

[Green+Leaders Annual Report](#)

Staff Commuting

Staff commuting by cycling, walking and rolling is **9% away** from the **2030 target**.

Staff commuting by public transit, car share, carpool, low-emission vehicles and hospital shuttle has met the **2030 target**.



* E.g. wheelchair, seated electric scooter

** E.g. electric and hybrid vehicles

2024 Fraser Health Climate Change Accountability Report (CCAR)

NAVIGATION

Table of Contents

Executive Message

Our Story: Fraser Health's Commitment to Planetary Health

Our Progress: Tracking the Journey

Energy and Carbon

Transportation

▶ Waste

Water

Our Leadership: Collaborative and Integrated Action

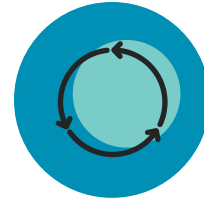
Our Partners

2024 GHG Emissions and Offsets Summary Table

References

RELATED REPORT

Green+Leaders Annual Report



Waste

| Key Performance Indicator (Metric)* | 2024** Results | 2025 Target | 2030 Target |
|--|----------------|-------------|-------------|
| Increase waste recycled or composted in acute care owned sites ^c (% recycled, annual average) | 30% | 33% | 40% |
| Increase waste recycled or composted in non-acute care owned sites ^d (% recycled, annual average) | 50% | 50% | 60% |
| Decrease waste generated per floor area in acute care owned sites (kg/m ² /year) | 16.5 | 13.7 | 12.3 |
| Decrease waste generated per floor area in non-acute care owned sites (kg/m ² /year) | 22.4 | 19.2 | 17.3 |



Collaborating to reduce plastic waste at Royal Columbian Hospital

- On track to meet target
- Minimal or slow progress toward target
- Behind schedule to meet target, and requires attention

* Does not apply to leased buildings because waste management is the responsibility of the property manager and Fraser Health does not have oversight.

** The waste portfolio reported is expanding which will require our targets to be re-evaluated in 2025. At a provincial level there is work on standardizing waste metrics, which may influence how we report waste moving forward.

2024 Fraser Health Climate Change Accountability Report (CCAR)

NAVIGATION

Table of Contents

Executive Message

Our Story: Fraser Health's Commitment to Planetary Health

Our Progress: Tracking the Journey

Energy and Carbon

Transportation

▶ Waste

Water

Our Leadership: Collaborative and Integrated Action

Our Partners

2024 GHG Emissions and Offsets Summary Table

References

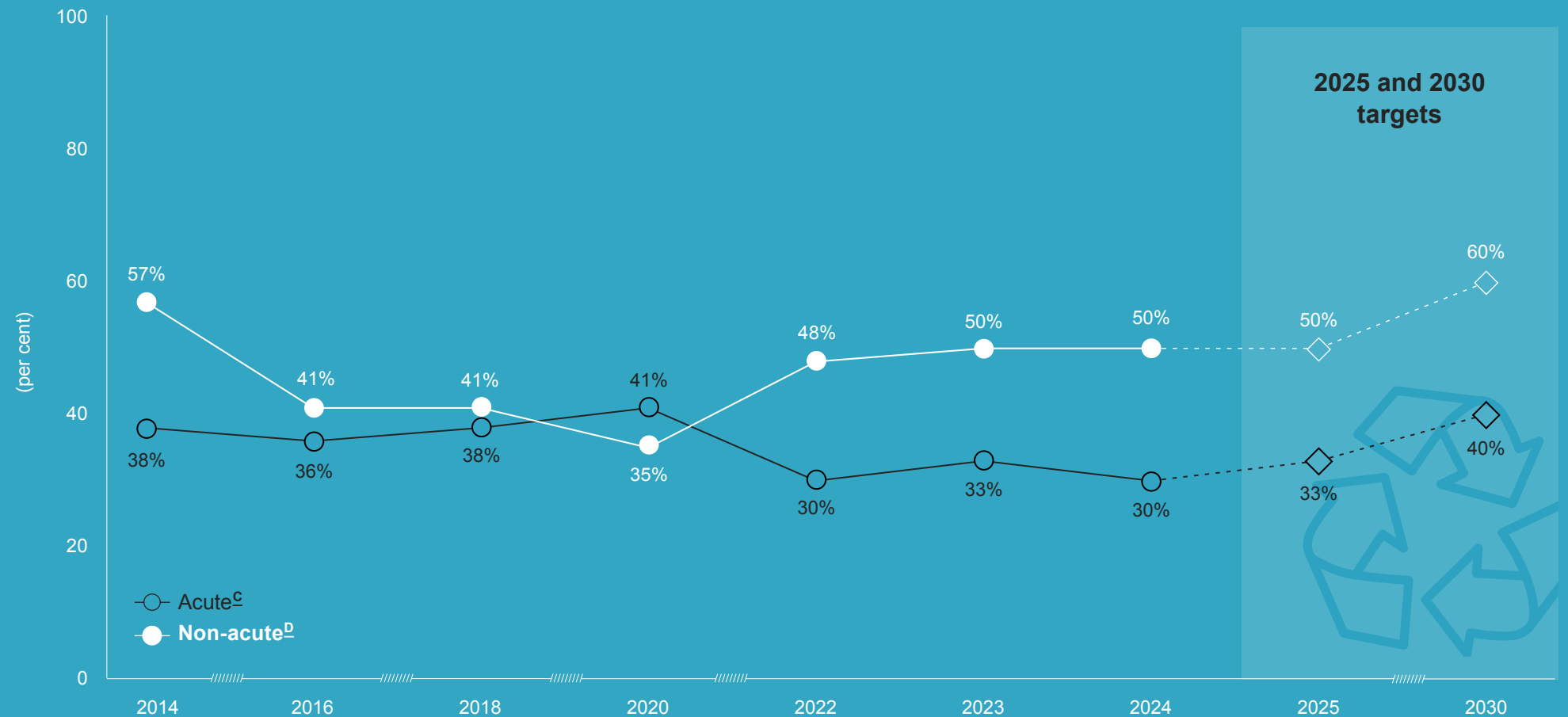
RELATED REPORT

Green+Leaders Annual Report

Recycling Rates

Understanding Our Recycling Rates

Some sites still face challenges with local municipalities accepting mixed recycling due to pandemic-related disruptions. Provincial working groups are exploring solutions, with impacted sites listed in [Reference C](#). To address these pauses, innovative recycling streams have been piloted and funded across health authorities. Long-standing programs such as furniture, e-waste, and battery recycling continue to contribute positively to our overall diversion rate. More recently, newer streams like PPE and Styrofoam recycling have been introduced to further expand our impact.



2024 Fraser Health Climate Change Accountability Report (CCAR)

NAVIGATION

Table of Contents

Executive Message

Our Story: Fraser Health's Commitment to Planetary Health

Our Progress: Tracking the Journey

- Energy and Carbon
- Transportation
- ▶ Waste
- Water

Our Leadership: Collaborative and Integrated Action

Our Partners

2024 GHG Emissions and Offsets Summary Table

References

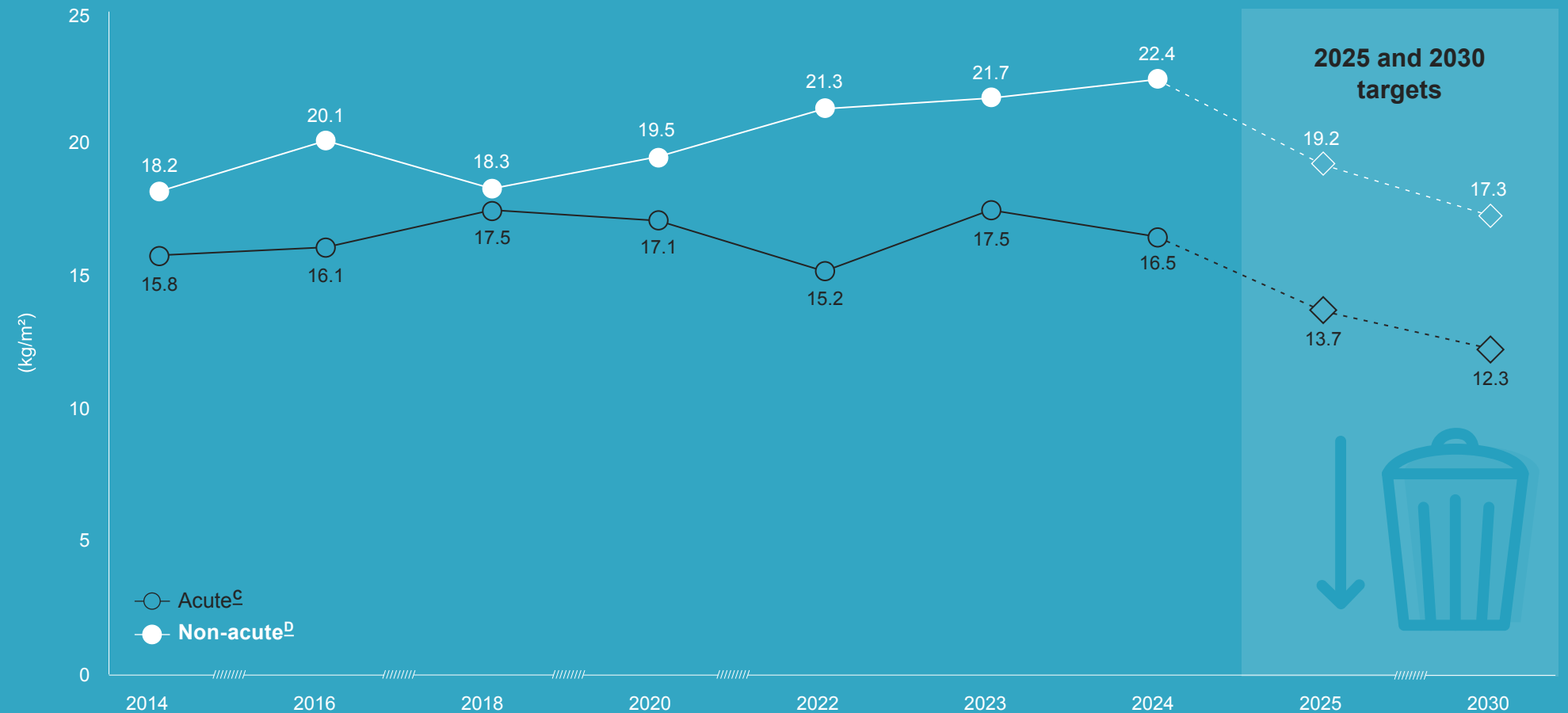
RELATED REPORT

Green+Leaders Annual Report

Waste Generation Per Floor Area

Explaining Our Waste Data

The waste targets per floor area were historically based on organics, recycling, and general waste streams. With new data for biomedical and additional recycling streams available in 2024, these results are not directly comparable to previous years. Adjustments may be made in 2025 to account for the expanded waste portfolio.



2024 Fraser Health Climate Change Accountability Report (CCAR)

NAVIGATION

Table of Contents

Executive Message

Our Story: Fraser Health's Commitment to Planetary Health

Our Progress: Tracking the Journey

Energy and Carbon

Transportation

Waste

▶ Water

Our Leadership: Collaborative and Integrated Action

Our Partners

2024 GHG Emissions and Offsets Summary Table

References

RELATED REPORT

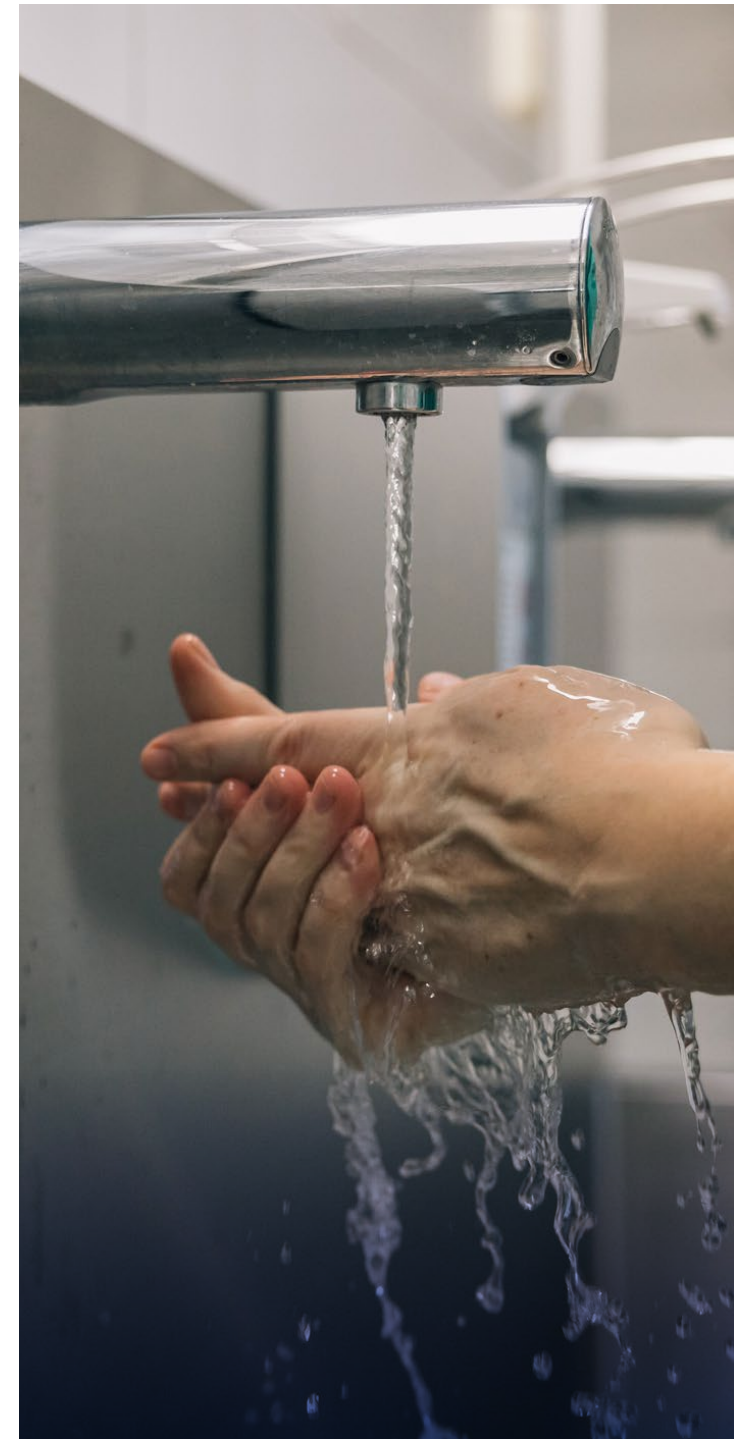
Green+Leaders Annual Report



Water

| Key Performance Indicator (Metric) | 2024 Results | 2025 Target | 2030 Target |
|--|--------------|-------------|-------------|
| Decrease the amount of water used per floor area in owned ^E buildings from 2010 levels (% change of m ³ /m ² /year) | 32% | 30% ■ | 35% ■ |

- On track to meet target
- ◆ Minimal or slow progress toward target
- Behind schedule to meet target, and requires attention



2024 Fraser Health Climate Change Accountability Report (CCAR)

NAVIGATION

[Table of Contents](#)

[Executive Message](#)

[Our Story: Fraser Health's Commitment to Planetary Health](#)

[Our Progress: Tracking the Journey](#)

[Energy and Carbon](#)

[Transportation](#)

[Waste](#)

[Water](#)

[Our Leadership: Collaborative and Integrated Action](#)

[Our Partners](#)

[2024 GHG Emissions and Offsets Summary Table](#)

[References](#)

RELATED REPORT

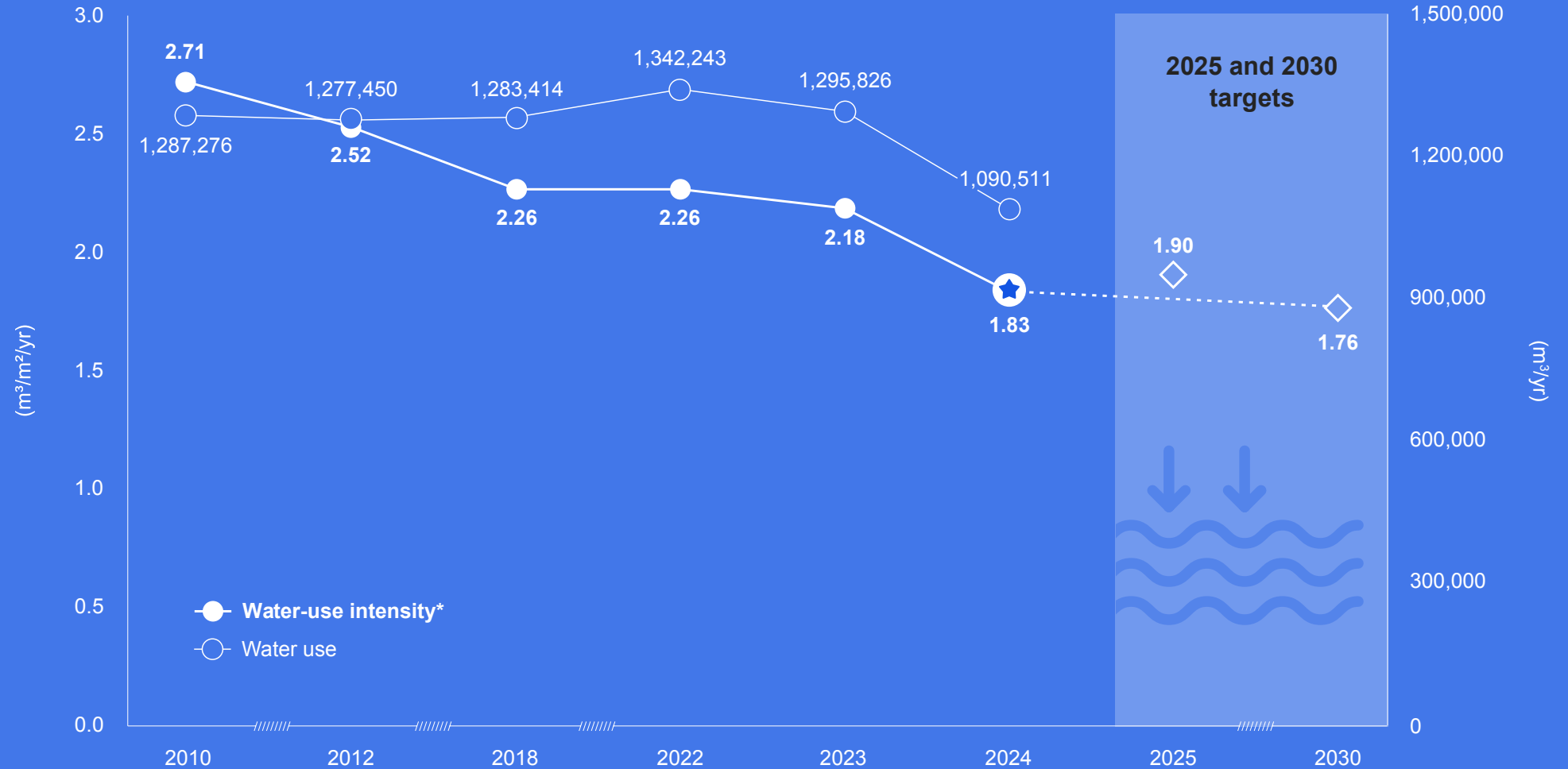
[Green+Leaders Annual Report](#)

Water Use and Intensity

Water use has decreased by **15%** since 2010.



Water-use intensity has decreased by **32%** since 2010, and has surpassed our 2025 target.*



* The facility space used to calculate the building water intensity differs from that used to calculate energy use and emissions intensity, due to different reference baseline years (2010 and 2007, respectively).

2024 Fraser Health Climate Change Accountability Report (CCAR)

NAVIGATION

[Table of Contents](#)

[Executive Message](#)

[Our Story: Fraser
Health's Commitment
to Planetary Health](#)

[Our Progress: Tracking
the Journey](#)

▶ [Our Leadership:
Collaborative and
Integrated Action](#)

[Buildings](#)

[Fleet Vehicles
and Transportation](#)

[Paper](#)

[Refrigerants](#)

[Climate Risk Management](#)

[Transforming Patient Care
with Planetary Health](#)

[Our Partners](#)

[2024 GHG Emissions and
Offsets Summary Table](#)

[References](#)

RELATED REPORT

[Green+Leaders Annual Report](#)



Our Leadership: Collaborative and Integrated Action

Fraser Health embraces planetary health through initiatives that reduce emissions, enhance climate resilience and improve our operational practices. We're committed to responding to evolving climate challenges while maintaining our exceptional standards for care. These highlights showcase our recent progress.

2024 Fraser Health Climate Change Accountability Report (CCAR)

NAVIGATION

[Table of Contents](#)

[Executive Message](#)

[Our Story: Fraser Health's Commitment to Planetary Health](#)

[Our Progress: Tracking the Journey](#)

[Our Leadership: Collaborative and Integrated Action](#)

▶ [Buildings](#)

[Fleet Vehicles and Transportation](#)

[Paper](#)

[Refrigerants](#)

[Climate Risk Management](#)

[Transforming Patient Care with Planetary Health](#)

[Our Partners](#)

[2024 GHG Emissions and Offsets Summary Table](#)

[References](#)

RELATED REPORT

[Green+Leaders Annual Report](#)



Buildings

Select 2024 actions and achievements

▶ Innovative heating solutions

Launched two gas heat pump pilot projects at Langley Memorial Hospital's Cedar and Maple Pavilions and Surrey Memorial Hospital's Shirley Dean Pavilion. As part of FortisBC's heat pump pilot programs, these systems ensure patient comfort while reducing their gas energy usage by an estimated 11,618 gigajoules annually. In recognition of these significant energy-saving efforts, FortisBC awarded Fraser Health the 2024 Provincial Public Sector Efficiency in Action Award.

▶ Boiler replacement program

Upgraded boilers at Langley Memorial Hospital with higher-efficiency models supported by FortisBC incentives, improving occupant comfort while reducing maintenance requirements and energy consumption. This enhancement contributes to facility-wide emission reduction goals.

▶ Energy-efficient lighting

Implemented lighting improvements at five facilities—Heritage Village, Parkholm Place, Chilliwack Health Centre, the Residence in Mission and Eagle Ridge Manor—enhancing safety for patients and staff with projected energy savings of 325,000 kilowatt-hours.

▶ Operational optimization

Launched a kitchen energy conservation campaign at Queen's Park Care Centre with funding from FortisBC. Initiated Continuous Optimization Programs at Abbotsford Regional Hospital (a Public-Private Partnership) and custom energy studies at Chilliwack General Hospital, Peace Arch Hospital, Ridge Meadows Hospital and Langley Memorial Hospital.

Spanning 187 buildings—79 per cent owned, 21 per cent leased^E—Fraser Health is B.C.'s largest regional health authority with more than 48,000 staff, medical staff and volunteers dedicated to serving our patients, families and communities.

Fraser Health has 14 LEED-certified buildings^G, demonstrating leadership in environmental design and sustainability. These buildings total 220,454 m² of green health care infrastructure.

PLANS MOVING FORWARD

In operating our current facilities, and in the design and construction of new facilities, Fraser Health is working toward the highest level of human and environmental health and well-being by:

- ▶ Evaluating and mitigating climate change impacts (e.g. wildfires, extreme heat, floods) on facilities and surrounding communities while implementing low-carbon resilience strategies. This approach draws on evidence linking health outcomes to built environment design and ensures facilities remain operational during extreme weather events.
- ▶ Collaborating with project compliance teams to embed energy and carbon performance targets into design and construction processes. Targeting green building certification such as Leadership in Energy and Environmental Design (LEED) while meeting and exceeding environmental and climate change legislation requirements to establish future-ready infrastructure.
- ▶ Partnering with Engineering and Operations teams to identify integrated energy and emissions reduction opportunities. Implementing ambitious energy retrofits to existing facilities alongside low-emission designs for new construction, making system-level changes during infrastructure renewal to create lower-impact facilities.
- ▶ Developing a comprehensive decision-making framework that targets load reduction, heat recovery, fuel switching and other carbon offset strategies while improving indoor environmental quality for staff and patients. This carbon reduction roadmap will guide future capital planning and operational improvements across the health care system.

NAVIGATION

Table of Contents

Executive Message

**Our Story: Fraser
Health's Commitment
to Planetary Health**

**Our Progress: Tracking
the Journey**

**Our Leadership:
Collaborative and
Integrated Action**

Buildings

▶ **Fleet Vehicles
and Transportation**

Paper

Refrigerants

Climate Risk Management

Transforming Patient Care
with Planetary Health

Our Partners

**2024 GHG Emissions and
Offsets Summary Table**

References

RELATED REPORT

Green+Leaders Annual Report



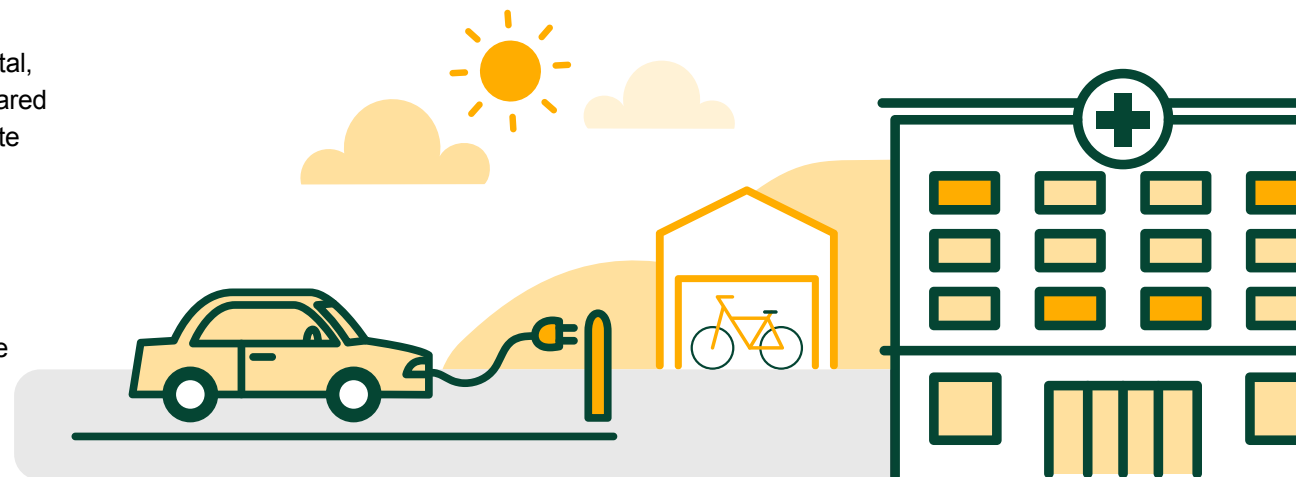
Fleet Vehicles and Transportation

Select 2024 actions and achievements

- ▶ **Regional electric vehicle (EV) charging infrastructure**
Launched the Regional EV Charging Station Framework, establishing clear roles, responsibilities and processes for installing EV charging stations across four health organizations, creating a foundation for sustainable transportation infrastructure and supporting emissions reduction goals.
- ▶ **Business travel emissions baseline**
Collaborated with Planetary Health partners and Payroll to measure baseline emissions from staff use of personal vehicles for work. This measurement, not included within fleet emissions reporting, creates a compelling case for targeted reduction strategies.
- ▶ **Bike storage improvements**
Partnered with Jared Deck from the Ch'iyáqtel First Nation to design murals in bike cages at Royal Columbian Hospital, Surrey Memorial Hospital and Peace Arch Hospital. Improvements also included increased bike storage, repair stations and I.D. access upgrades across Fraser Health.
- ▶ **Carpool program**
Launched a staff carpool program at Royal Columbia Hospital, Surrey Memorial Hospital and Central City to encourage shared vehicle use, reduce commuting emissions and reduce on-site parking demand.
- ▶ **Recognition from TransLink**
Earned "Transit Friendly Employer" status from TransLink by offering 50 per cent transit subsidies with 10 per cent staff participation, demonstrating commitment to sustainable transportation in a region with typically lower transit use.

PLANS MOVING FORWARD

- ▶ Continuing to expand measurement of transportation emissions beyond fleet to identify and target the most impactful areas for emissions reduction.
- ▶ Continuing to work collaboratively with transportation partners to address gaps and opportunities in access to sustainable transportation across Fraser Health.
- ▶ Using an Active Transportation Accessibility Scan to tailor transportation strategies to Fraser Health sites.
- ▶ Continuing to work collaboratively with municipal and regional organizations to increase access by sustainable transportation to Fraser Health sites.



2024 Fraser Health Climate Change Accountability Report (CCAR)

NAVIGATION

Table of Contents

Executive Message

Our Story: Fraser Health's Commitment to Planetary Health

Our Progress: Tracking the Journey

Our Leadership: Collaborative and Integrated Action

Buildings

Fleet Vehicles
and Transportation

▶ Paper

▶ Refrigerants

Climate Risk Management

Transforming Patient Care
with Planetary Health

Our Partners

2024 GHG Emissions and Offsets Summary Table

References

RELATED REPORT

Green+Leaders Annual Report



Paper

Select 2024 actions and achievements

▶ Switching to Sugar Sheet

PHSA Procurement made Sugar Sheet available for purchase across Fraser Health. This high-quality stock is produced with sugar cane pulp—a by-product of sugar production—instead of wood from trees. The shift supports emission reduction efforts, achieving up to 55 per cent lower life cycle GHG emissions and saving 26 trees per ton of paper produced.^H

▶ Default double-sided printing

The Department of Population and Public Health upgraded their printers to make double-sided printing the default setting, significantly reducing paper waste. Other departments are also making the switch.

▶ Digital technologies

In 2024, Fraser Health expanded the new digital health records system, MEDITECH Expanse, to Royal Columbian Hospital, building on the successful 2023 implementation at Eagle Ridge, Fraser Canyon and Mission Memorial hospitals. The transition to digital records significantly reduces paper use, helping to minimize our environmental footprint for printing, physical storage and transport of paper charts.

PLANS MOVING FORWARD

- ▶ Promoting paperless invoicing within departments where operationally feasible.



Refrigerants

Select 2024 actions and achievements

▶ Leaked refrigerant baseline

Conducted assessment to measure refrigerant emissions from large equipment such as chillers.

PLANS MOVING FORWARD

- ▶ Expanding the refrigerant database by including smaller equipment units to create a more complete and accurate inventory for our owned sites, and working with operators of our leased sites to capture relevant data.
- ▶ Collecting more detailed technical data, such as refrigerant type, full charge amount and applicable leak rate standards, to better track equipment performance and inform maintenance or upgrade decisions.
- ▶ Reviewing refrigerant phase-out plans and the impact on equipment performance and the environment.

2024 Fraser Health Climate Change Accountability Report (CCAR)

NAVIGATION

Table of Contents

Executive Message

Our Story: Fraser Health's Commitment to Planetary Health

Our Progress: Tracking the Journey

Our Leadership: Collaborative and Integrated Action

Buildings

Fleet Vehicles and Transportation

Paper

Refrigerants

► Climate Risk Management

Transforming Patient Care with Planetary Health

Our Partners

2024 GHG Emissions and Offsets Summary Table

References

RELATED REPORT

Green+Leaders Annual Report



Climate Risk Management

Select 2024 actions and achievements

► Building for the future

Integrated climate considerations into the planning of the Burnaby Hospital Redevelopment, New Surrey Hospital and BC Cancer Centre, and several long-term care facilities, enhancing cooling, indoor air quality and extreme weather preparedness.

► National leadership in climate standards

Supported the implementation of [Health Standards Organization's Declaration on Climate Change](#) through representation on the national Climate Action Advisory Committee. This work aims to enable planning and action to drive progress toward decarbonization, climate resilience and sustainable health care systems.

► Strengthening our climate commitment

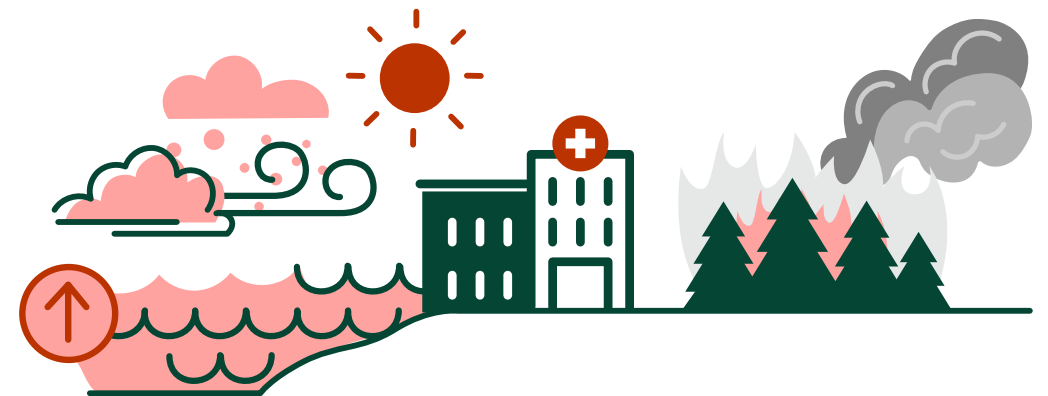
Advanced organizational commitment to climate resilience by developing objectives and key results, creating a planetary health dashboard and initiating a provincial working group to address unreported health care emissions. These actions lay the groundwork for a comprehensive, systems-level approach to addressing climate risk.

► Award-winning Inter- and Intra-Health Authority Relocation (IIHAR) toolkit

Refined and expanded the IIHAR Toolkit developed with Health Emergency Management BC, B.C. health authorities and Indigenous partners, providing 21 standardized tools for patient-centred, culturally safe facility evacuations during climate emergencies. This innovative approach earned the **2025 BC Quality Award for Strengthening Health & Wellness**.

► Enhanced climate emergency preparedness

Developed key systems and tools to support climate resilience, including a provincial dashboard tracking long-term care and assisted living facilities' capacity during evacuations, a staff registry for emergency redeployment, and a comprehensive wildfire response preparedness framework defining clear activation protocols and coordination structures.



2024 Fraser Health Climate Change Accountability Report (CCAR)

NAVIGATION

Table of Contents

Executive Message

Our Story: Fraser Health's Commitment to Planetary Health

Our Progress: Tracking the Journey

Our Leadership: Collaborative and Integrated Action

Buildings

Fleet Vehicles and Transportation

Paper

Refrigerants

Climate Risk Management

► Transforming Patient Care with Planetary Health

Our Partners

2024 GHG Emissions and Offsets Summary Table

References

RELATED REPORT

Green+Leaders Annual Report

Transforming Patient Care with Planetary Health

Select 2024 actions and achievements

Food



- ▶ In 2024, the Langley and Burnaby Hospitals signed on to the [CoolFood Pledge](#), an initiative from the World Resources Institute that helps food service operators commit to and achieve a science-based target to reduce the climate impact of the food they serve, demonstrating commitment to understanding and reducing the environmental impact of food services.

- ▶ The Long-Term Care and Assisted Living Research Unit partnered with Korean company Nuvilab and Royal Columbian Hospital's Food Services to study and reduce food waste.

Fraser Health staff across diverse disciplines and departments are taking a holistic approach to advancing planetary health. Our strategy extends beyond compliance with emissions targets and climate resilience, and looks at health care's broader impacts. Here are some examples of how we are reducing the impact of our services on the planet and creating a climate resilient health system.

Energy and Carbon



Phased out desflurane—a potent GHG used in anesthesiology—at multiple sites. Recognizing leakage issues and the resulting emissions, Fraser Health also secured agreements to decommission the piped-in nitrous oxide system at three sites and is developing an approach to use portable tanks as an alternative where required.

Water



Nine acute care sites completed Metro Vancouver Pollution Prevention Plans for 2025–2030, strengthening our commitment to protecting local ecosystems. These comprehensive plans establish a framework for keeping contaminants out of waterways while ensuring responsible wastewater management across multiple facilities.

Materials



- ▶ Successfully piloted a program returning unused medications to hospital inventory at Surrey Memorial and Langley Memorial hospitals, representing significant environmental and cost savings.

- ▶ Completed a successful quality improvement trial and analysis of reusable surgical gowns at Peace Arch Hospital to support further roll-outs across other Fraser Health sites.

- ▶ Completed waste audit at Delta Mountain View Manor long-term care facility to identify opportunities to improve waste management in similar facilities across Fraser Health.

2024 Fraser Health Climate Change Accountability Report (CCAR)

NAVIGATION

[Table of Contents](#)

[Executive Message](#)

[Our Story: Fraser Health's Commitment to Planetary Health](#)

[Our Progress: Tracking the Journey](#)

[Our Leadership: Collaborative and Integrated Action](#)

- [Buildings](#)
- [Fleet Vehicles and Transportation](#)
- [Paper](#)
- [Refrigerants](#)
- [Climate Risk Management](#)
- ▶ [Transforming Patient Care with Planetary Health](#)

[Our Partners](#)

[2024 GHG Emissions and Offsets Summary Table](#)

[References](#)

RELATED REPORT

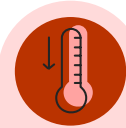
[Green+Leaders Annual Report](#)

Impact Stories



Mock drill with Fraser Health staff and partners

Strengthening Health Care Resilience



During extreme heat events, New Westminster's Emergency Monitoring Centre (EMC) is a proactive step toward climate adaptation: the EMC operates from a secure, climate-controlled facility, providing first-responder assessments and on-site health care professionals who monitor and escalate patient care. This innovative approach prevents hospital overcrowding while protecting vulnerable populations during climate emergencies.

[Read more ▶](#)



Raj Sandhu, resident care coordinator, and Matt Richmond, former food services manager

Stirring Up Change



Staff at Ellen Sinclair Kennett Lodge embarked on a project to transition from single-use plastic to reusable metal spoons for medication rounds. In 2024, the initiative saved 37,437 spoons from going to landfill. If this effort were to be implemented in all long-term care facilities in Fraser Health, it would save approximately \$250,000 and an estimated 15 million plastic spoons annually.

[Read more ▶](#)



Meagan Argumedo, Fraser Health Carpool Program Advisor

Driving Sustainability



Fraser Health launched its first carpool program at Royal Columbian Hospital in March 2024. The platform helps employees find carpool partners, track trips and reduce carbon emissions while helping staff to save on commuting costs and avoiding the stress of finding parking.

[Read more ▶](#)



Maple Hill Lodge, a long-term care site at Langley Memorial Hospital

Revolutionizing Climate Control



Langley Memorial Hospital's long-term care facilities required cooling system updates. Gas Absorption Heat Pumps were installed as a modern, sustainable solution that provides both heating and cooling more efficiently. This dual-purpose system operates year-round, leading to an expected 22 per cent reduction in energy use and significantly improved operational efficiency.

[Read more ▶](#)

2024 Fraser Health Climate Change Accountability Report (CCAR)

NAVIGATION

Table of Contents

Executive Message

**Our Story: Fraser
Health's Commitment
to Planetary Health**

**Our Progress: Tracking
the Journey**

**Our Leadership:
Collaborative and
Integrated Action**

► **Our Partners**

**2024 GHG Emissions and
Offsets Summary Table**

References

RELATED REPORT

Green+Leaders Annual Report

Our Partners

We are grateful to the organizations listed below, which are key external partners and collaborators who have been crucial in advancing our ongoing planetary health initiatives. This list is not a comprehensive representation of all the valuable relationships and efforts that drive our collective impact.

2024 Fraser Health Climate Change Accountability Report (CCAR)

NAVIGATION

[Table of Contents](#)

[Executive Message](#)

[Our Story: Fraser
Health's Commitment
to Planetary Health](#)

[Our Progress: Tracking
the Journey](#)

[Our Leadership:
Collaborative and
Integrated Action](#)

► [Our Partners](#)

[2024 GHG Emissions and
Offsets Summary Table](#)

[References](#)

RELATED REPORT

[Green+Leaders Annual Report](#)

Our Partners

B

BC Centre for Disease Control
BC Emergency Health Services
BC Housing
BC Hydro
BC Ministry of Emergency Management
and Climate Readiness
BC Ministry of Energy and Climate Solutions
BC Ministry of Environment and Parks
BC Ministry of Health
BC Ministry of Infrastructure
BC Renal

C

Canadian Coalition for Green Health Care
CASCADES Canada
Climate Action Secretariat
Climate Data Canada

E

Environment and Climate Change Canada

F

First Nations Health Authority
FortisBC

H

Health Canada
Health Emergency Management BC
Health Quality BC
Homelessness Services Association of BC

I

Interior Health
Island Health

L

Local and regional governments

M

Métis Nation British Columbia
MOSAIC

N

National Research Council of Canada
Northern Health
Nourish Leadership

P

Pacific Climate Impacts Consortium
Pacific Institute for Climate Solutions
Providence Health Care
Provincial Health Services Authority
Provincial Nursing Skin and Wound Committee

S

Simon Fraser University

U

University of British Columbia

V

Vancouver Coastal Health

NAVIGATION

Table of Contents

Executive Message

**Our Story: Fraser
Health’s Commitment
to Planetary Health**

**Our Progress: Tracking
the Journey**

**Our Leadership:
Collaborative and
Integrated Action**

Our Partners

**► 2024 GHG Emissions and
Offsets Summary Table**

References

RELATED REPORT

Green+Leaders Annual Report

2024 GHG Emissions and Offsets Summary Table

| Fraser Health 2024 GHG Emissions and Offsets Summary | |
|--|-------------|
| GHG emissions for the period January 1 - December 31, 2024 | |
| Total BioCO ₂ | 212 |
| Total emissions (tCO ₂ e) | 42,293 |
| Total offsets (tCO ₂ e) | 42,081 |
| Adjustments to offset required GHG emissions reported in prior years | |
| Total offsets adjustment (tCO ₂ e) | 49.5 |
| Grand total offsets for the 2024 reporting year | |
| Grand total offsets to be retired for 2024 reporting year (tCO ₂ e) | 42,131 |
| Offset investment (\$) | \$1,053,275 |
| Offset investment (\$) including GST | \$1,105,939 |

RETIREMENT OF OFFSETS

In accordance with the requirements of the Climate Change Accountability Act and the Carbon Neutral Government Regulation, Fraser Health (the Organization) is responsible for arranging for the retirement of the offsets obligation reported above for the 2024 calendar year, together with any adjustments reported for past calendar years (if applicable). The Organization hereby agrees that, in exchange for the Ministry of Energy and Climate Solutions (the Ministry) ensuring that these offsets are retired on the Organization’s behalf, the Organization will pay within 30 days, the associated invoice to be issued by the Ministry in an amount equal to \$25 per tonne of offsets retired on its behalf plus GST.

- i BioCO₂ is included in total emissions but not total offsets.
- ii Emissions and offset investment amounts will be validated by the Climate Action Secretariat prior to distributing invoices.
- iii “Grand Total Offsets to be Retired” are rounded to a whole number before multiplying by \$25 per tCO₂e.

2024 Fraser Health Climate Change Accountability Report (CCAR)

NAVIGATION

[Table of Contents](#)

[Executive Message](#)

[Our Story: Fraser Health's Commitment to Planetary Health](#)

[Our Progress: Tracking the Journey](#)

[Our Leadership: Collaborative and Integrated Action](#)

[Our Partners](#)

[2024 GHG Emissions and Offsets Summary Table](#)

[References](#)

RELATED REPORT

[Green+Leaders Annual Report](#)

References

A In 2024, Fraser Health-owned and -operated facilities included in energy metering were (* denotes a facility that is not owned but is monitored for energy usage):

- Langley Memorial Hospital
- Royal Columbian Hospital
- Eagle Ridge Hospital
- Ridge Meadows Hospital
- Burnaby Hospital
- Surrey Memorial Hospital
- Delta Hospital
- Peace Arch Hospital
- Mission Memorial Hospital
- Chilliwack General Hospital
- Parkholm Place
- Cottage and Worthington Pavilions
- Fraser Canyon Hospital
- Queen's Park Care Centre
- Fellburn Care Centre
- Heritage Village
- Chilliwack Health Centre
- Czorny Alzheimer Centre*
- Creekside Withdrawal Management Centre*
- Maple Ridge Treatment Centre
- Jim Pattison Outpatient Care and Surgery Centre
- Timber Creek Tertiary Care Facility
- Peace Arch Hospital Foundation Lodge*
- Abbotsford Regional Hospital

B The GreenCare survey is an annual survey distributed to staff and medical staff within Fraser Health, Providence Health Care, Provincial Health Services Authority and Vancouver Coastal Health. The survey is used to assess perspectives, experiences and behaviours related to the environment and to planetary health, through which the EES and Planetary Health teams can monitor progress and identify opportunities to build a sustainable, climate resilient health system. The survey captures behavioural data from the previous calendar year (i.e. the 2025 Greencare survey is used to collect 2024 data).

C Fraser Health acute care sites included in waste related key performance indicators are as follows (* denotes facilities that are still working on returning to pre-2020 recycling service levels; ** denotes facilities with unverified waste data):

- Abbotsford Regional Hospital and Cancer Centre*
- Burnaby Hospital**
- Chilliwack General Hospital*
- Delta Hospital
- Eagle Ridge Hospital
- Jim Pattison Outpatient Care and Surgery Centre
- Langley Memorial Hospital
- Mission Memorial Hospital*
- Peace Arch Hospital
- Ridge Meadows Hospital*
- Royal Columbian Hospital
- Surrey Memorial Hospital*

D Fraser Health non-acute sites included in waste related key performance indicators are:

- Cottage-Worthington Pavilion
- Creekside Withdrawal Management Centre
- Czorny Alzheimer Centre
- Heritage Village
- Fellburn Care Centre
- Queen's Park Care Centre
- Timber Creek Tertiary Care

E In 2024, Fraser Health-owned and operated facilities included in water metering were (* denotes a facility that is not owned but is monitored for water usage):

- Langley Memorial Hospital
- Royal Columbian Hospital
- Eagle Ridge Hospital
- Ridge Meadows Hospital
- Burnaby Hospital
- Surrey Memorial Hospital
- Delta Hospital
- Peace Arch Hospital
- Mission Memorial Hospital
- Chilliwack General Hospital
- Parkholm Place
- Cottage and Worthington Pavilions
- Fraser Canyon Hospital
- Queen's Park Care Centre
- Fellburn Care Centre
- Heritage Village

2024 Fraser Health Climate Change Accountability Report (CCAR)

NAVIGATION

Table of Contents

Executive Message

**Our Story: Fraser
Health's Commitment
to Planetary Health**

**Our Progress: Tracking
the Journey**

**Our Leadership:
Collaborative and
Integrated Action**

Our Partners

**2024 GHG Emissions and
Offsets Summary Table**

► **References**

- Chilliwack Health Centre
- Czorny Alzheimer Centre*
- Creekside Withdrawal Management Centre*
- Maple Ridge Treatment Centre
- Jim Pattison Outpatient Care and Surgery Centre
- Timber Creek Tertiary Care
- Peace Arch Hospital Foundation Lodge*
- Abbotsford Regional Hospital

F Information sources for buildings: ARCHIBUS and Fraser Health Real Estate Team.

G Information source for LEED: [Canadian Green Building Council project database](#).

H Trucost. Environmental Performance from Sugar Sheet Paper. Social Print Paper, 2017. Available from: <https://www.kpu.ca/sites/default/files/SocialPrintPaper-Trucost-SugarSheet-2017.pdf>.

RELATED REPORT

Green+Leaders Annual Report



Carbon Neutral

